



ANNUAL REPORT

Center for Excellence in
Teaching & Learning

JULY 1st 2023-JUNE 30th 2024





TABLE OF CONTENTS

| | |
|---------------------------|----|
| Contact Us | 3 |
| About Us | 4 |
| Redefining CETL | 7 |
| Program Highlights | 11 |
| 2023-2024 Faculty Fellows | 14 |
| AY25 Series Offerings | 17 |
| Coming Soon | 21 |
| Overview | 22 |



ONLINE

[Request assistance and access resources here](#)



PHONE

(804) 523-5612
M-F, 9am-3pm



IN PERSON

Burnette Hall
Suite 162



EMAIL

[Click here to email CETL!](#)



FACEBOOK

[Click her for the CETL-sponsored Facebook page!](#)



HAVING TROUBLE?

[Request assistance with this form](#)

CONTACT US

CENTER FOR EXCELLENCE IN TEACHING & LEARNING



ABOUT US

CETL at Reynolds Community College promotes the values of quality in teaching and learning, supports faculty in their development of instructional and professional skills, and delivers training programs that assist in strengthening the strategic priorities of the institution.

OUR MISSION

To promote evidence-based instructional practices that empower Reynolds faculty to meet the diverse needs of our students in order to prepare them for high demand careers and further study through transfer programs.



OUR VISION

Inspire passion for lifelong learning among our Reynolds community and beyond.

MEET OUR TEAM



DR. BRIANNE JACKSON

she | her

DEAN OF CETL

"This year, I'm most excited to take CETL to the next level."



C.J. BRACKEN

he | him

COORDINATOR FOR INSTRUCTIONAL DESIGN & LMS ADMINISTRATION

"This year, I'm most excited to work with faculty and develop model courses."



KEVIN PRUYN BOULEY

he | him

INSTRUCTIONAL DESIGNER

"This year, I'm most excited to become a QM-Certified Peer Reviewer."



DEVERICK STRAND

he | him

INSTRUCTIONAL DESIGNER

"I'm most excited about attending InstructureCon to learn more about Canvas."



BENNARDO GARCIA-FRIAS

she | they

ADMINISTRATIVE ASSISTANT

"This year, I'm most excited to design new workflows for CETL processes."



JOSEPH PRADY

he | him

STUDENT WORKER

"This year, I'm most excited to help facilitate the new CETL events."



DR. STEPHANIE DANIEL

she | her

BEST PRACTICE FOR ONLINE INSTRUCTION

"This year, I'm most excited to develop new resources to support faculty."



DR. JENNIFER HITCHCOCK

she | her

HIGH IMPACT PRACTICES IN STUDENT SUCCESS

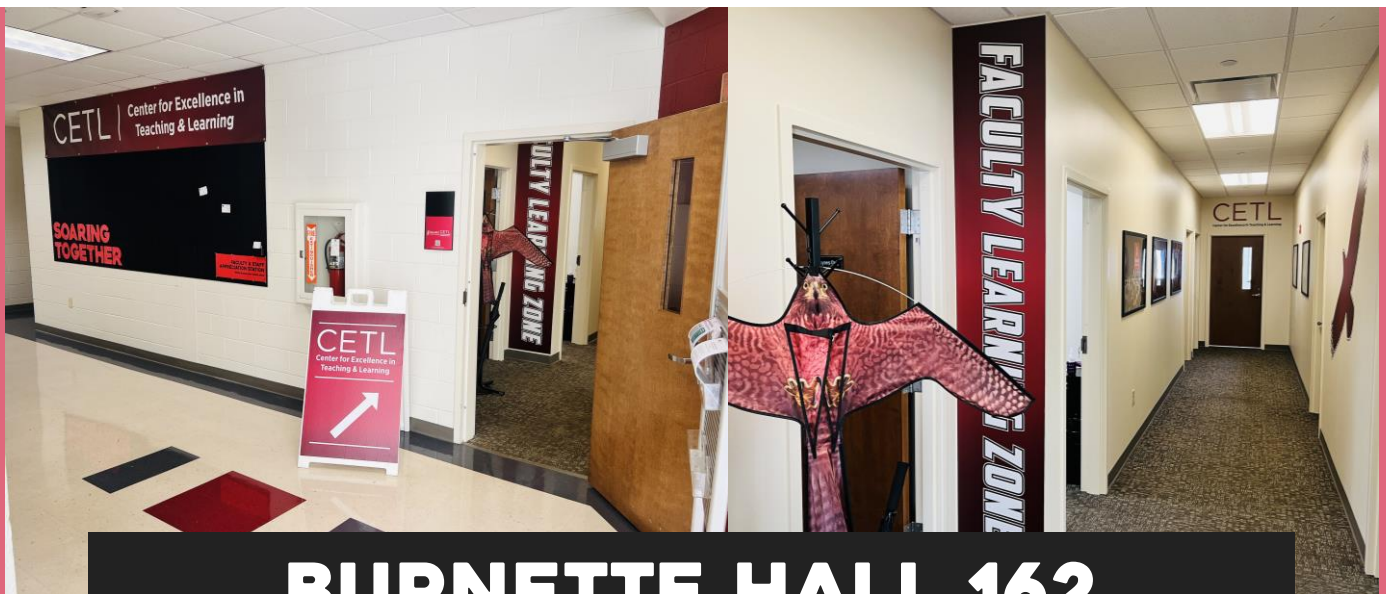
"This year, I'm most excited to help faculty implement high-impact teaching practices."

FACULTY FELLOWS

WE'VE MOVED

Come visit us in our new offices!

This spring, we had the tremendous good fortune to move a bit closer to the faculty we serve. We're excited for the opportunities the space affords us—like hosting new and impactful events!



BURNETTE HALL 162



WE APPRECIATE YOU

Our new offices have given us more room to really express how thankful we are for our faculty and staff. Come join us by posting a thank-you on our new Appreciation Board. Perhaps you'll find one addressed to you too!

REDEFINING CETL

Last year, CETL had the pleasure of welcoming **Dr. Brianne Jackson** as our new director.

In her first year, Dr. Jackson performed a thorough needs analysis for both college faculty and internal CETL operations. Based on the results of this analysis, CETL has made tremendous changes to **support faculty better than ever before.**



GREATER PRESENCE

Connected with deans and faculty to foster relationships that would ensure CETL could meet and exceed their needs.



RENOVATED WEBSITE

Completely overhauled the former CETL website, allowing faculty to easily access resources and request assistance.



SHIFT IN FOCUS

Transitioned Faculty Learning Opportunities (FLOs) to **focus on teaching and pedagogy** rather than primarily tech support.



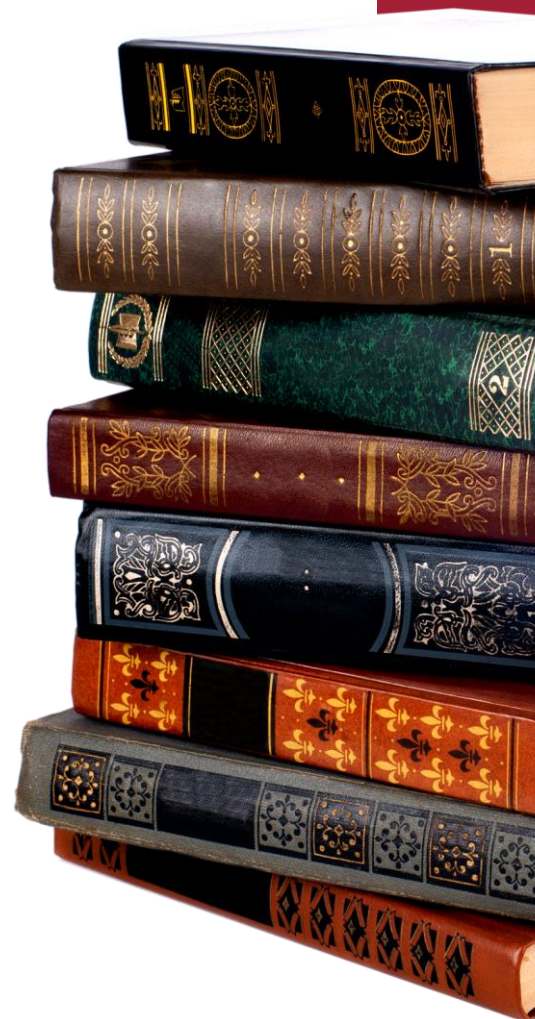
HIGHER STANDARDS

Began the implementation of VCCS and QM standards in all course trainings while also assisting in the development of Reynolds Flight Path.



MORE COLLABORATION

Began collaborations with Reynolds Libraries, Career Services, Student Life, and Student Services.



“Since Bri’s arrival two main things have happened –1. We know what CETL is, what it includes, and that they are here for the faculty and 2. Modernizing the classroom with equipment, skills, training, and resources to improve course offerings, curriculum, and/or faculty’s ability to teach to the highest levels has become common, welcomed, supported and re-energized on formerly denied projects.

This is absolutely due to the arrival of Bri.”

Chef Jesse Miller
Program Head, Culinary Arts



“Bri jumped in to join our planning committee for the 2024 Faculty Forum. A joy to work with.”

Marty Watkin
Co-Program Head, ESL

“As a new instructor, Bri has helped me find different ways to relay information to students that they would find interesting and valuable.

I have enjoyed her enthusiasm and forward thinking when it comes to education.”

Chef Josh Savilisky
Instructor, Culinary Arts

“Under the visionary leadership of Bri, CETL is making remarkable strides.

Bri’s commitment to faculty development, innovative course design, and rigorous quality standards is transforming our approach to course development and teaching practices, while ensuring excellence and fostering a culture of continuous improvement.”

CJ Bracken
CETL, Coordinator for Instructional Design & LMS Administration

“Bri has worked across schools to take the best ideas from all deans and implement them for the benefit of all faculty.

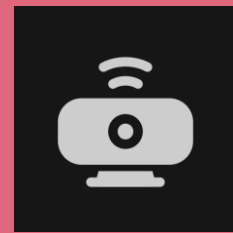
Collaborating with her and CETL has allowed me to focus on the high-level ideas that will most benefit my school as I know they will create and plan the most appropriate method for training and informing faculty.”

Dr. James Wolfe
Professor of Mathematics

Welcome, Dr. Jackson!

163 unique faculty participated in **80** CETL sponsored events and activities

(**66** attended more than once!)



HYFLEX

CETL offered **46** workshop opportunities (HyFlex 101, 201, 301)

23 faculty trained

Students enrolled:
93 in Summer 23

632 in Fall 23

851 in Spring 24



CETL offered **186%**
more sessions with
a **168%** increase
in participation

44 participants
were adjunct
faculty



PROGRAMMING HIGHLIGHTS



LUNCH & LEARN

Lunch and Learns are opportunities for faculty members to share their content expertise or successes in the classroom in an informal and yummy setting.

Back this year by popular demand, our series has included everything from how to better utilize student support services to understanding neurodivergence in the classroom.

3 sessions **28** attendees **14** attended multiple!

INTRODUCTION TO TEACHING@REYNOLDS

This year, CETL decided to take the Teaching@Reynolds course (previously given to new teaching faculty) and revamp it into a New Faculty Orientation.

It now encompasses not only best teaching practice, but also incorporates important information that new faculty need to know to be successful at Reynolds.



New Faculty Orientation to be available FALL 2024!

Assisted **17** new faculty!

COURSE REDESIGN WORKSHOPS



In partnership with Reynolds libraries and Alchemy, Inc., CETL is helping **20** faculty redesign **20** courses for online asynchronous delivery, **ALL** of which are model courses to support Reynolds Flight Path.

Model courses have been designed to meet quality standards and instructional design best practices. **They will be available for all faculty to use.**

PARTICIPATING FACULTY ARE ASKED TO:

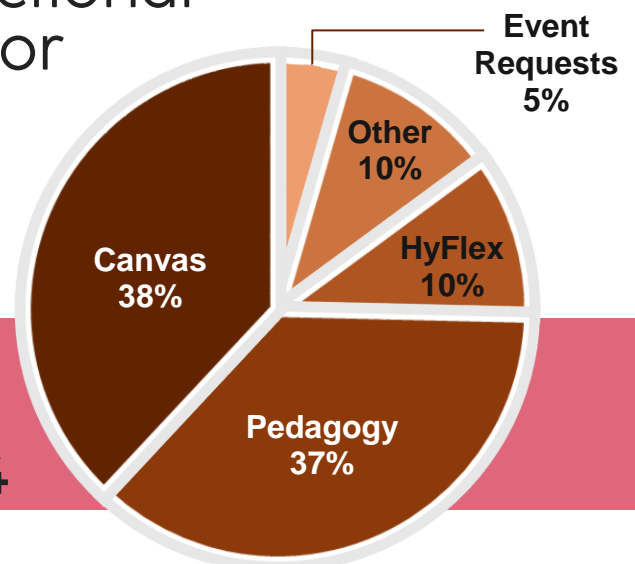
- Attend a 1:1 meeting with CETL to review and conduct a survey of their course
- Complete and submit a course design timeline & design map
- Attend at least 2 monthly meetings with CETL
- Produce a finished course in Canvas that meets the Reynolds Online Course Design Checklist
- Acknowledge that their course template will be made available to Reynolds faculty for future use



1:1 CONSULTATIONS

Back by popular demand are the 1:1 consultations, where faculty can meet individually with a CETL instructional designer in person, by Zoom, or by phone. We're here and happy to help you with your teaching needs!

CONSULTATION
TOPIC AREAS
2023-2024



Request a 1:1 consultation any time by completing [our request form here](#).

2023-2024 HYFLEX FELLOW Kathy Larue

"The best parts of the fellowship were working with the CETL staff and working with faculty from across the college.

I hope they learned something from me because I know I learned something from each of them. Kudos to Reynolds for investing in CETL, HyFlex, and the faculty."



Recorded a
"What is HyFlex?"
video to assist
faculty



Writing a chapter in
Brian Beatty's book,
*Hybrid-Flexible
Course Design.*



Modified a HyFlex
Course Quality rubric
to meet Reynolds
requirements

Developed HyFlex
301 Asynchronous
course & presented
HyFlex 301 to **39**
faculty

PRESENTED AT:

New Horizons 2023

New Horizons 2024

2024 Faculty Professional
Development Day

The Online Learning Peer
Group Meeting

HSS In-Service Day

Facilitated HyFlex
student surveys
and additional
student-centered
R&D



2023-2024 LEARNING & SUPPORT FELLOW Karen Layou

"It was a privilege to serve as the inaugural Presidential Faculty Fellow and support the College's investment in CETL as a resource for faculty.

I truly enjoyed sharing teaching experiences with my colleagues via various FLOs and connecting with them during one-on-one consultations."

Assisted **33**
faculty in 1:1
Consultations

LED/CO-FACILITATED:

8 FLOs with Career
Services

Reynolds Speaker Series
with Student Life

APPDO Session

Faculty focus group
discussions on CETL
efficacy

Assisted new CETL
director in the
reimagining and
rebuilding of CETL
internal policies



Competed
Program Head role
and compensation
research

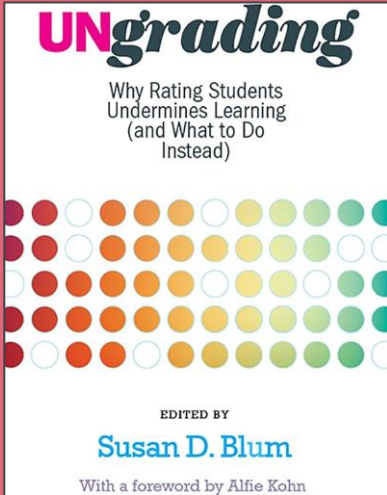
- Conducted 20 1:1 interviews
- Wrote summary document of identifies needs and potential action items
- Drafted and edited PH procedural manual with ALT



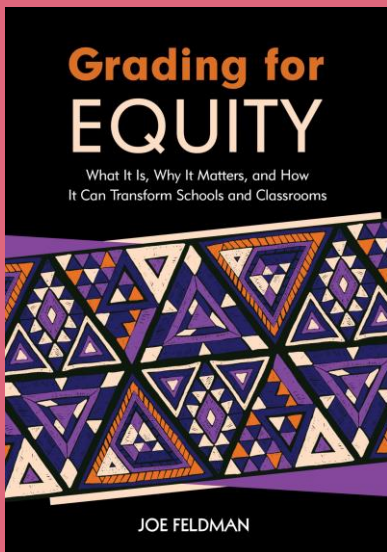
Contributed research
and facilitated report
writing on two ATD
implementation teams

EQUITY READING GROUP

A faculty-led initiative where participants read books together throughout the semester to discuss strategies to cultivate inclusive and equitable approaches to teaching in our classrooms.



Explored contrasting perspectives on assessment and how different methods can inhibit or enhance student learning and equity



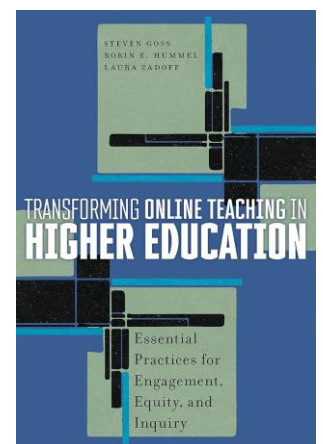
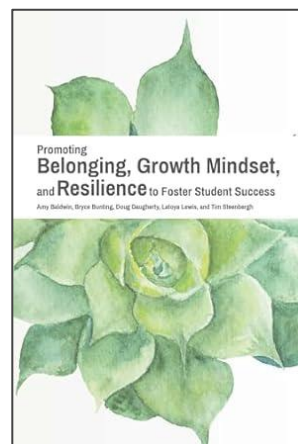
Attended by **4-9** faculty per session

Hosted an interactive conversation on grading at Faculty Forum

Attended by **26** faculty from all schools

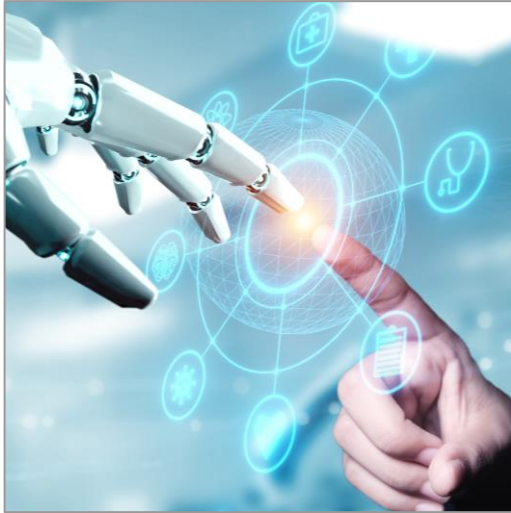
This year, Equity Reading Group will explore books with an emphasis on evidence-based, practical strategies and concrete steps that can be implemented immediately into online and in-person classrooms.

Stay tuned for updates from our Faculty Fellows in the fall!



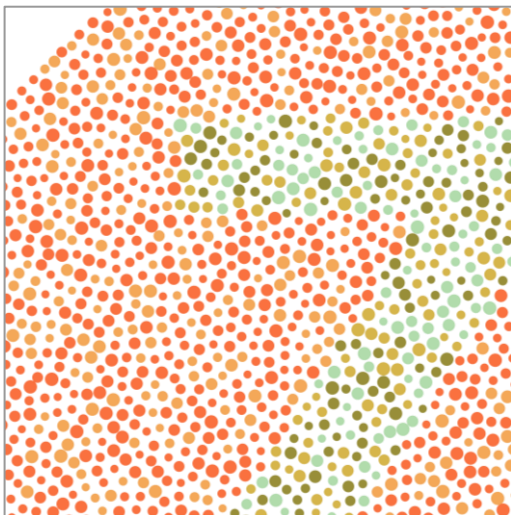
AY2025 SERIES OFFERINGS

All offerings are designed to be modular. **Faculty are welcome to participate in the entire series or simply attend individual sessions—** Whatever suits your interest, need, or schedule!



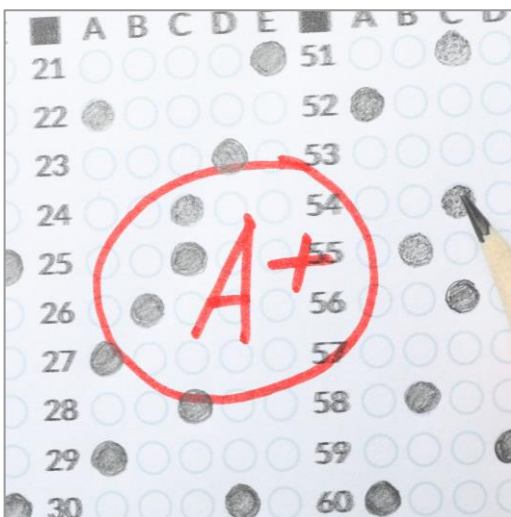
AI

Explore accessibility in course design, master effective assessment techniques, and develop career competencies to prepare students for the workforce. Join us for workshops focused on creating accessible materials, fair grading practices, and essential career skills.



ACCESSIBILITY

Are you new to accessibility in course design and unsure where to begin? These sessions serve as an introduction to the topic of accessibility with an emphasis on what it means to create accessible course materials.



ASSESSMENTS

These interactive workshops will delve into best practices for designing effective assessments and creating clear, fair grading policies. Join us to elevate your assessment techniques and ensure your grading practices promote transparency and equity in your classroom.

BACK TO BASICS

Good teaching is good teaching, but it often gets lost in a land of tech innovation and Edu-jargon. This series aims to get back to the basics of what can best make our students successful.



CAREER COMPETENCIES

Let's help our students gain the soft skills employers are seeking! Come join Career Services and CETL as we explore Career Competencies geared toward preparing our students for the workforce.



DATA LITERACY

Community College faculty and administrators will guide discussions and workshops on leveraging data for student success.

Topics include using data to improve teaching, student engagement and retention, how to support individual dashboards, and more!





DESIGN

This series is designed to empower you with the knowledge and confidence to transform your courses and elevate student success through course design.

These sessions offer practical strategies, tools, and principles to enhance your skills in creating accessible content and designing for inclusive, flexible learning environments that meet diverse student needs.



HIGH IMPACT PRACTICES

Participants in this series will learn how to apply Transparency in Learning and Teaching (TILT) and growth mindset strategies to revise and assess assignments across disciplines to improve student learning, engagement, and success.



HYFLEX

Explore CETL's HyFlex Series, empowering faculty and support teams with essential skills for adapting to hybrid-flexible learning environments.

From classroom setup to effective teaching strategies and course design, master the art of HyFlex instruction with us.





LUNCH & LEARN

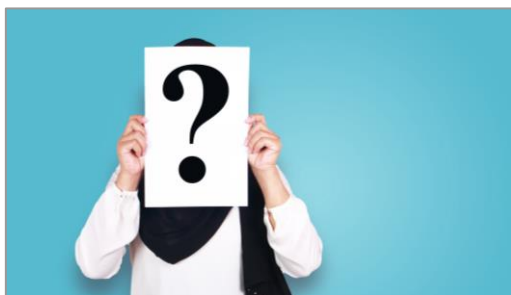
Lunch and Learns are opportunities for faculty members to share their content expertise or successes in the classroom in an informal and yummy setting.



MASTERING ONLINE COURSE DESIGN

This comprehensive workshop series covers essential aspects of online course design and delivery.

Topics include creating clear objectives, aligning activities, structuring content, implementing interactive elements and assessments, and much more!



GUEST SESSIONS

Keep an eye out for special guest sessions that will be announced throughout the year!

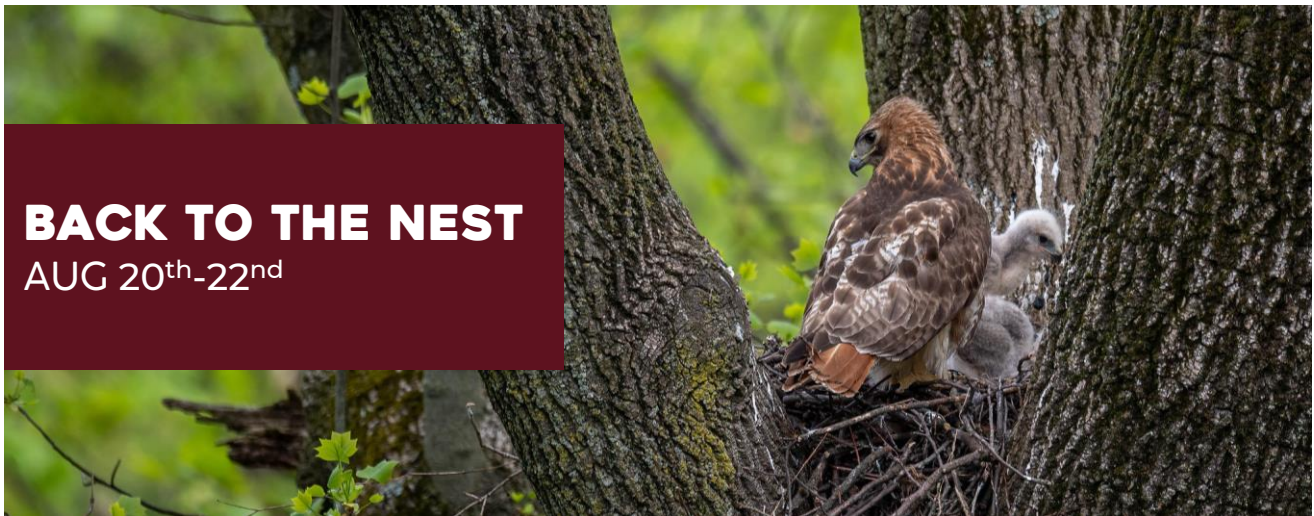
NOTICE SOMETHING MISSING?

Join our monthly CETL Faculty Advisory Committee!

Members directly influence key CETL decisions, impact development of CETL's future offerings, and provide critical feedback on how we can best meet each school's needs. [Apply here!](#)



COMING SOON



BACK TO THE NEST

AUG 20th-22nd

This August CETL will host the inaugural Back to the Nest celebration, welcoming faculty back to the new academic year and to provide support and assistance in getting classes started. [Get a sneak-peek at our schedule here!](#)



ADJUNCT NEWSLETTER

AUGUST 2024

In addition to CETL's standard monthly newsletter, CETL will now be offering *Adjunct Avenue*—a newsletter curated specifically to the needs and interests of our adjunct faculty.



ASYNCHRONOUS ADJUNCT LEARNING

SPRING 2025

CETL will soon offer short, fully online asynchronous training options to best fit adjunct needs and schedules. These courses will focus on everything from Canvas to Assessment to Supporting Your Students and much more!

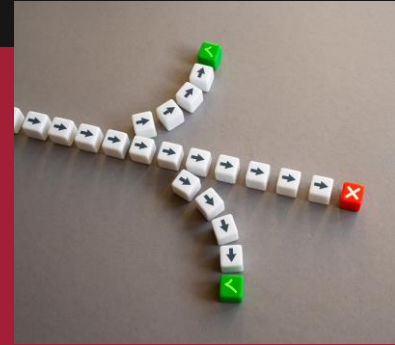
BIRD'S EYE VIEW



CETL offered **186%** more sessions and saw a **168%** increase in faculty Participation



Reinstated **LUNCH & LEARNS** and **1:1 CONSULTATIONS** per results from needs analysis



Redesigned **20** courses to support Flight Path. These are model courses that will be available to **ALL FACULTY**



Revamped Teaching @ Reynolds into **NEW FACULTY ORIENTATION** to better support all new faculty



Created new **BACK TO THE NEST** to prepare all faculty for upcoming academic year



CONTACT US!



WWW
SITE



EMAIL



FACEBOOK



HELP



(804) 523-5612



Burnette Hall
Suite 162