

Accessing Reynolds Wireless

As part of an ongoing effort to increase security and features of the guest wireless network, a new system has been implemented that will impact the traditional ways that staff and student devices are connected. New wireless networks have been created for students, staff, and guests so secure access can be provided for basic Internet connectivity for their mobile devices including laptops, tablets, and mobile phones.

The instructions in this document are for connecting new devices to the network for the first time. **Successive connections following the first successful connection will automatically connect to the network without any user intervention.**

Contents

Connecting Devices to JSR-Students	2
Connect a Wireless Device via Manual Registration	3

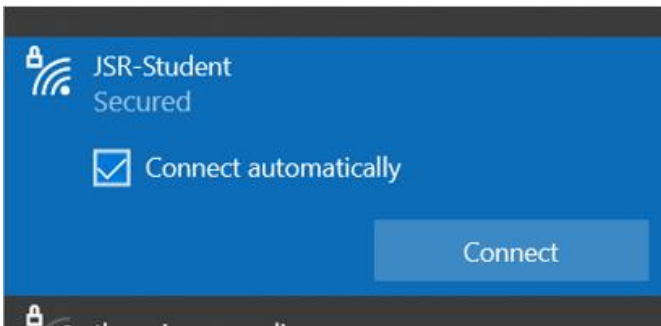
Connecting Devices to JSR-Students

Most consumer devices such as laptops and cell phones will be able to determine this sign-on is required and will prompt that additional action is needed to gain access to the network. For these devices, please continue with steps outlined below.

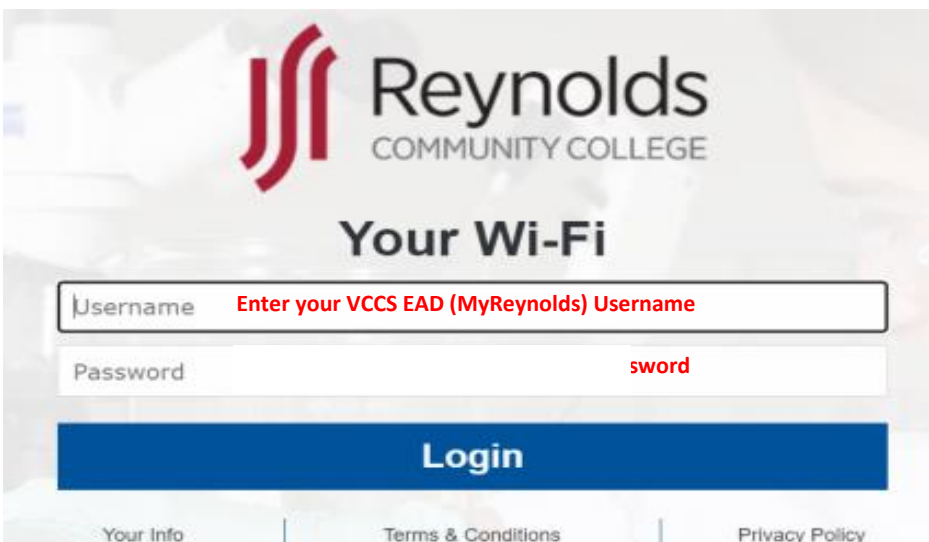
For devices that do not have web browsers or captive portal detection such as gaming consoles, a manual registration is required for the wireless device to gain access to the network. For these devices, please continue with steps outlined on the next page of this document.

Connect a Wireless Device via Credential Login

- Connect to the JSR-Students wireless network to associate the wireless client. You may select the checkbox to 'Connect Automatically' to save this network connection for later use.



- The device should prompt that additional action is needed to complete authentication to the network. Select this prompt to continue.
- The Reynolds captive portal will display in a webpage prompting for user credentials to continue. Please enter your **VCCS EAD (MyReynolds) user credentials** and select **Login**.



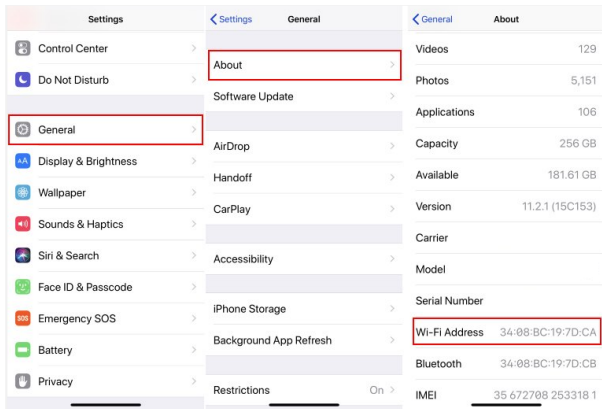
- Once connected to the wireless, please test:
 - Internet access
 - Email
 - VPN (laptops only)
- If issues occur, please reach out to the Reynolds helpdesk for assistance.

Connect a Wireless Device via Manual Registration

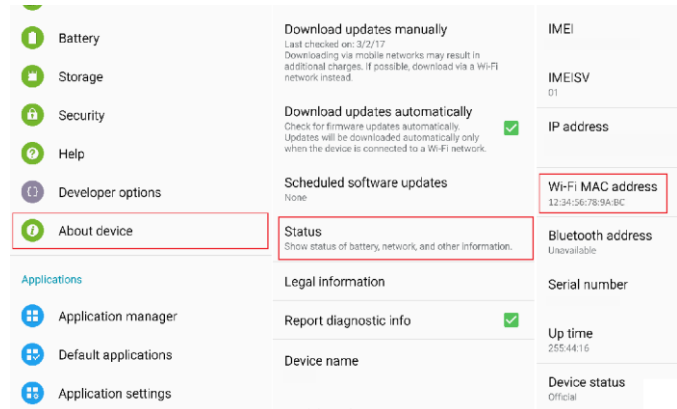
Some devices do not support login via web page. For these devices to be able to connect successfully to the wireless, they will need to be manually registered so the system knows to allow access based on the device's MAC address. **You may manually register a total of 5 devices.**

To manually register a device for use on the wireless, another device must be used that already has Internet access. The network adapter MAC address must also be collected from the device you wish to register. The MAC address will be 12 characters typically in the form of xx:xx:xx:xx:xx:xx. Some examples of finding the MAC (hardware) address are shown below:

Apple iPhone

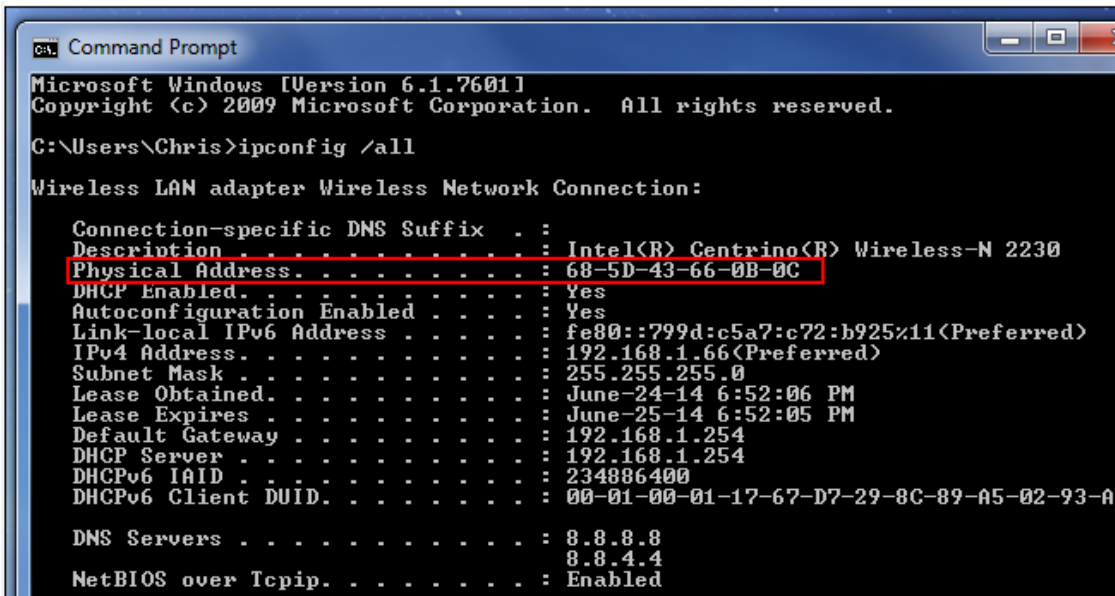


Android



Windows

- Open a command prompt by pressing Windows key + R, typing 'cmd', and pressing Enter.



To manually register the device MAC address, or check registration status, navigate to <https://vccs.campuswifi.net/device/>

Please enter your **VCCS EAD (MyReynolds) user credentials**, check the box to agree with the Terms and Conditions, then select 'Get Online'.

The screenshot shows the login page for the Personal Device Registration Portal. At the top is the Virginia's Community Colleges logo. Below it is the title "Personal Device Registration Portal". A message says "Please click below to manage your personal devices." There are two input fields: "Username" with a red asterisk and "Password" with a red asterisk. A blue button labeled "Get Online!" is below the fields. A checkbox for "I agree to the Terms and Conditions." is also present. At the bottom are links for "Your Info", "Terms & Conditions", and "Privacy Policy".

- You may view your device in the Manage Device section and add/remove entries as desired.

The screenshot shows the "Manage Device" section of the portal. The browser address bar shows "vccs.campuswifi.net/device/manage/". The page features the Virginia's Community Colleges logo and a "Logout ma289" link. The main heading is "Device Registration Portal". Below this, there is a message: "You can register your gaming, streaming and printing device. Please note that this is a non-secure network and does not guarantee the privacy of your data and communication while using this service. Instructions on how to use this service or use the help icons for more information." A section titled "Add Device" shows "1 of 5 Devices Active". Below this is a table with columns: "Mac Address * e.g 11:22:aa:bb:33:44", "Device Name *", "Device Description", "Device Type", and "Device Connected via". The "Mac Address" field contains "Mac Address", "Device Name" contains "Device Name", "Device Description" contains "Device Description (Optional)", "Device Type" is a dropdown menu with "Please select" selected, and "Device Connected via" is a dropdown menu with "Wireless (Wi-Fi)" selected. A blue "Add Device" button is at the bottom left of the table.

- Select 'Add Device' to register a new device for access. You may register **up to 5 devices**.

Device Registration Portal

You can register your gaming, streaming and printing device.

Please note that this is a non-secure network and does not guarantee the privacy of your data and communication while using this service.

Instructions on how to use [this service](#) or use the help icons for more information.

Add Device
0 of 50 Devices Active

Mac Address * e.g 11:22:aa:bb:33:44	Device Name *	Device Description	Device Type	Device Connected via
<input type="text" value="Mac Address"/>	<input type="text" value="Device Name"/>	<input type="text" value="Device Description (Optional)"/>	<input type="text" value="Please select"/>	<input type="text" value="Wireless (Wi-Fi)"/>

[+ Add Device](#)

Lost or Stolen
Delete
Update

- Complete the appropriate fields including the MAC address and device name, then select 'Add Device' to complete the registration. An example of a completed form is below:

Mac Address * e.g 11:22:aa:bb:33:44	Device Name *	Device Description	Device Type	Device Connected via
<input type="text" value="7C:70:DB:ED:33:07"/>	<input type="text" value="SRL44307"/>	<input type="text" value="Michael's Laptop"/>	<input type="text" value="Laptop"/>	<input type="text" value="Wireless (Wi-Fi)"/>

[+ Add Device](#)

- The device registration entry will be displayed in the portal.

[+ Add Device](#)

Lost or Stolen
Delete
Update

Manage Devices
0 of 50 Devices Active

	Mac Address	Device Name	Device Description	Device Connected via	Status	Action
<input type="checkbox"/>	7C:70:DB:ED:33:07	SRL44307	Michael's Laptop	Wireless (Wi-	Not Active ?	Update Activate Delete

Splash Page Connected Devices

Mac Address	Device	Date Connected	Access Point Mac	Action
No devices connected via Splash				

- To correct values in the device entry, make the change in the applicable field and select **Update**.
- To submit the device registration, select **Activate**.
- To remove the device from the portal, select **Delete**.